

ibuyer.hk

Welcome to the CostingNet specific user manual – this is a step by step illustration of CostingNet

- This is a specific instruction for CostingNet V11.01 onward. For earlier version please refer to the old manual.
- For installation instruction, please refer to the separate installation guide.
- For the general instruction of our software, please refer to the ibuyer.hk general software manual.
- For the platform, database structure and design change of software, please refer to the technical manual

Table of content

01. Target user of CostingNet. (p.02)
02. Design concept of CostingNet. (p.02)
03. Start using CostingNet (p.03)
04. Costing table(p.04)
05. Creating a costing sheet (p.05)
06. Retail price calculation (p.08)
07. Costing sheet example. (p.11)
08. Create quotation. (p.12)
09. Cost comparison report. (p.13)
10. Workgroup user name and password (p.15)

Target user of CostingNet

The CostingNet is designed for target cost calculation. It covers all kinds of soft line products, apparel, garment, fashion accessories, socks, neckties, household textiles, premiums, giftware and general merchandise. Ideal for buying office, trading agents, manufacturer or exporter.

It gathers the style details, fabrics, trims, labor, subcontract, manufacturing cost breakdown and then issue costing sheet. It also calculate markup % and selling price for retailer or chain store operator whoever domestic or export.

The design concept of CostingNet

The CostingNet is supposed to be used by buying office and manufacturer that require precise costing element. The CostingNet is simply saying a detail costing table, quotation and cost comparison system. It is designed with a two important modules;

1. Costing table; collect style information with fabrics, trims, labor, subcontract and other cost breakdown.
2. Quotation; issue price quote to customer.

Logic of using CostingNet;

On the dashboard, it is navigate from left to right, top to bottom. From basics > workflows > BOM reports > cost comparison reports. User must create a costing detail for an article (style) before they can issue a quotation to customer. Since they have to select article no. in the dashboard and convert it to quotation, otherwise it won't be available for selection.

Start using CostingNet

Once opened, you will see following screen:

Once it is open normally, the dashboard will display for user to read / write their data.

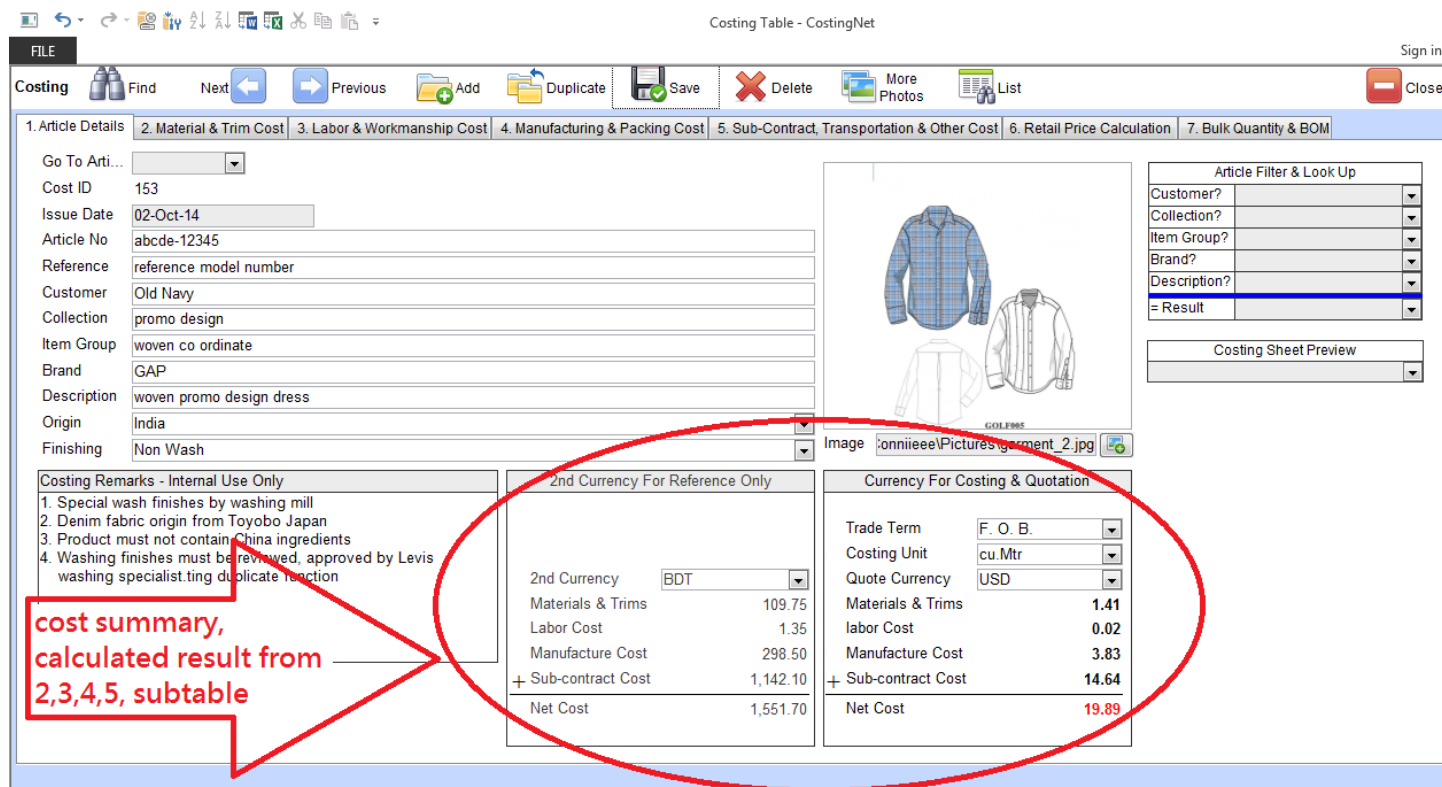
BASICS	WORKFLOWS	BOM REPORTS	COST COMPARISON REPORT																																
<div>Company</div> <div>Currencies Exchange</div> <div>Admin</div>	<div>Costing Table</div> <div>Quotation</div> <div>Documentation Filing Database</div> <div>Administration Department</div> <div>Merchandising Department</div> <div>QC / Production Department</div> <div>Shipping / Warehouse Department</div> <div>Accounts Department</div>	<div>1. Please select article no. for grouping</div> <div>Article No</div> <div>*</div> <div>2. Print Preview BOM Report</div> <div>Convert above article list to quotation</div>	<div>1. Select Filter Parameter For Reports</div> <table border="1"> <tr><td>Customer</td><td></td></tr> <tr><td>Collection</td><td></td></tr> <tr><td>Item</td><td></td></tr> <tr><td>Brand</td><td></td></tr> <tr><td>Description</td><td></td></tr> <tr><td>Origin</td><td></td></tr> </table> <div>2. Select Filter Parameter For Reports</div> <table border="1"> <tr><td>Material Trim</td><td></td></tr> <tr><td>Spec</td><td></td></tr> <tr><td>Supplier</td><td></td></tr> </table> <div>3. Select Filter Parameter For Reports</div> <table border="1"> <tr><td>Labor</td><td></td></tr> <tr><td>Spec</td><td></td></tr> <tr><td>Supplier</td><td></td></tr> </table> <div>4. Select Filter Parameter For Reports</div> <table border="1"> <tr><td>Manufacture</td><td></td></tr> <tr><td>Supplier</td><td></td></tr> </table> <div>5. Select Filter Parameter For Reports</div> <table border="1"> <tr><td>Subcontract</td><td></td></tr> <tr><td>Supplier</td><td></td></tr> </table> <div>6. Cost Comparison Reports</div> <div></div>	Customer		Collection		Item		Brand		Description		Origin		Material Trim		Spec		Supplier		Labor		Spec		Supplier		Manufacture		Supplier		Subcontract		Supplier	
Customer																																			
Collection																																			
Item																																			
Brand																																			
Description																																			
Origin																																			
Material Trim																																			
Spec																																			
Supplier																																			
Labor																																			
Spec																																			
Supplier																																			
Manufacture																																			
Supplier																																			
Subcontract																																			
Supplier																																			

Costing table

This is the main form for all of the costing you are going to create in this software. Once it is open, it will pull out your costing sheet one by one with descending order. (The last or most recent Cost ID will show on top)

The Cost ID number is an auto number and is generated by the database user won't be able to change it.

It is an important number for each costing record, may use it to find, select in the pull down list.



Costing Table - CostingNet

FILE Costing Find Next Previous Add Duplicate Save Delete More Photos List Sign in Close

1. Article Details 2. Material & Trim Cost 3. Labor & Workmanship Cost 4. Manufacturing & Packing Cost 5. Sub-Contract, Transportation & Other Cost 6. Retail Price Calculation 7. Bulk Quantity & BOM

Go To Arti... Cost ID 153 Issue Date 02-Oct-14 Article No abcde-12345 Reference reference model number Customer Old Navy Collection promo design Item Group woven co ordinate Brand GAP Description woven promo design dress Origin India Finishing Non Wash

Article Filter & Look Up Customer? Collection? Item Group? Brand? Description? = Result

Costing Sheet Preview

Costing Remarks - Internal Use Only

1. Special wash finishes by washing mill
2. Denim fabric origin from Toyobo Japan
3. Product must not contain China ingredients
4. Washing finishes must be reviewed, approved by Levis washing specialist. ting duplicate function

2nd Currency For Reference Only

2nd Currency	BDT
Materials & Trims	109.75
Labor Cost	1.35
Manufacture Cost	298.50
+ Sub-contract Cost	1,142.10
Net Cost	1,551.70

Currency For Costing & Quotation

Trade Term	F. O. B.
Costing Unit	cu.Mtr
Quote Currency	USD
Materials & Trims	1.41
labor Cost	0.02
Manufacture Cost	3.83
+ Sub-contract Cost	14.64
Net Cost	19.89

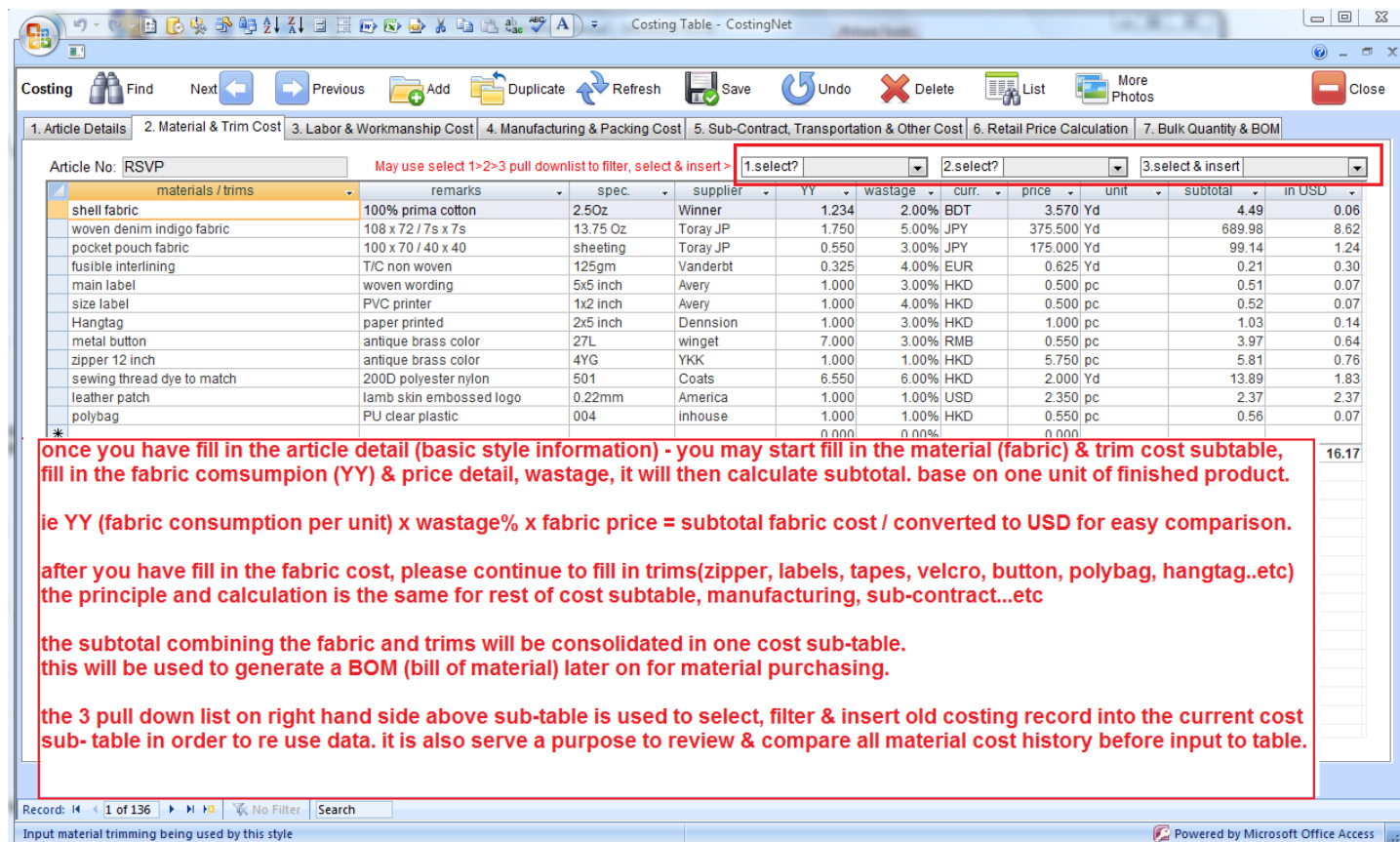
cost summary, calculated result from 2,3,4,5, subtable

The cost summary is a calculated result, you won't be able to edit on it directly. It will reflect the change you have made on the sections of the cost sub-table. (i.e. 2, 3, 4, 5 cost sub-table)

There are 2 cost summary.

1. Currency for costing & quotation – use this cost as main currency for quotation and comparison. i.e. USD, EUR
2. 2nd currency for reference only – use this cost as reference for your local currency. i.e. RMB, BDT, INR

For example, if your factory is producing garment, you should have a counter sample on hand when doing this costing sheet. During the costing procedures, you have to check with the pattern maker on the YY of the fabric, lining, and interlining and trim fabrics. Meantime, you have to count the YY (consumption) of the trims and accessories. Just like main label, care label, size label, buttons, studs, zipper, thread and etc.



Article No: RSVP

May use select 1>2>3 pull downlist to filter, select & insert >

materials / trims	remarks	spec	supplier	YY	wastage	curr.	price	unit	subtotal	in USD
shell fabric	100% prima cotton	2.5Oz	Winner	1.234	2.00%	BDT	3.570	Yd	4.49	0.06
woven denim indigo fabric	108 x 72 / 7s x 7s	13.75 Oz	Toray JP	1.750	5.00%	JPY	375.500	Yd	689.98	8.62
pocket pouch fabric	100 x 70 / 40 x 40	sheeting	Toray JP	0.550	3.00%	JPY	175.000	Yd	99.14	1.24
fusible interlining	T/C non woven	125gm	Vanderbt	0.325	4.00%	EUR	0.625	Yd	0.21	0.30
main label	woven wording	5x5 inch	Avery	1.000	3.00%	HKD	0.500	pc	0.51	0.07
size label	PVC printer	1x2 inch	Avery	1.000	4.00%	HKD	0.500	pc	0.52	0.07
Hangtag	paper printed	2x5 inch	Dennsion	1.000	3.00%	HKD	1.000	pc	1.03	0.14
metal button	antique brass color	27L	winget	7.000	3.00%	RMB	0.550	pc	3.97	0.64
zipper 12 inch	antique brass color	4YG	YKK	1.000	1.00%	HKD	5.750	pc	5.81	0.76
sewing thread dye to match	200D polyester nylon	501	Coats	6.550	6.00%	HKD	2.000	Yd	13.89	1.83
leather patch	lamb skin embossed logo	0.22mm	America	1.000	1.00%	USD	2.350	pc	2.37	2.37
polybag	PU clear plastic	004	inhouse	1.000	1.00%	HKD	0.550	pc	0.56	0.07
				0.000	0.00%		0.000			

16.17

Record: 1 of 136

Input material trimming being used by this style

Powered by Microsoft Office Access

once you have fill in the article detail (basic style information) - you may start fill in the material (fabric) & trim cost subtable, fill in the fabric consumption (YY) & price detail, wastage, it will then calculate subtotal. base on one unit of finished product.

ie YY (fabric consumption per unit) x wastage% x fabric price = subtotal fabric cost / converted to USD for easy comparison.

after you have fill in the fabric cost, please continue to fill in trims(zipper, labels, tapes, velcro, button, polybag, hangtag..etc) the principle and calculation is the same for rest of cost subtable, manufacturing, sub-contract...etc

the subtotal combining the fabric and trims will be consolidated in one cost sub-table. this will be used to generate a BOM (bill of material) later on for material purchasing.

the 3 pull down list on right hand side above sub-table is used to select, filter & insert old costing record into the current cost sub- table in order to re use data. it is also serve a purpose to review & compare all material cost history before input to table.

After you finish fill in these information, you have to move to the manufacture and sub-contract charges section of the costing sub-table. An approval sample on hand would help merchandiser minimize error or mistakes.

User may select from the right hand side (select 1, 2, select & insert 3) 3 column of selection pull down list or they can select, filter and insert old record to the material / trims, remarks and spec. field.

The 3 column of selection is pulling out the record that inputted previously by users and most importantly it has an average price of the selected fabric / trims in the database for comparison. Similar to other cost breakdown sub-table, this is very helpful for merchandiser to decide whether the cost they are using is relevant and competitive.

2nd Currency For Reference Only		Currency For Costing & Quotation	
2nd Currency	BDT	Trade Term	F. O. B.
Materials & Trims	109.75	Costing Unit	cu.Mtr
Labor Cost	1.35	Quote Currency	USD
Manufacture Cost	298.50	Materials & Trims	1.41
+ Sub-contract Cost	1,142.10	labor Cost	0.02
Net Cost	1,551.70	Manufacture Cost	3.83
		+ Sub-contract Cost	14.64
		Net Cost	19.89

1. Currency for costing & quotation; the currency that quote to your customer, USD, EUR, AUD, GBP
2. 2nd currency for reference only; the currency of your production origin: BDT, INR, PKR, LKR, KHR, THB

Retail price calculation

After the merchandiser has finished inputting the cost breakdown section 1, 2, 3, 4, and 5 they may use section 6 if needed;

Retail price calculation - This serves 5 purposes and flexibility on the costing table;

1. Complete the costing sheet by choosing net cost to Fty cost (factory cost)
2. Insert the net cost to Fty cost (factory cost) field for further calculation.
3. If the merchandiser is not required to prepare the fabrics, trims, labor, manufacturing and subcontract cost except retail price.
4. Provide the flexibility whether or not using the net cost as the factory cost. Merchandiser may directly input a factory cost.
5. Continue to use the Fty cost (factory cost) to calculate ex-origin, landed and retail price.

Costing Table - CostingNet

FILE Find Next Previous Add Duplicate Save Delete More Photos List

1. Article Details 2. Material & Trim Cost 3. Labor & Workmanship Cost 4. Manufacturing & Packing Cost 5. Sub-Contract, Transportation & Other Cost 6. Retail Price Calculation 7. Bulk Quantity & BOM

Article No: lean-abcde trade term Ex - Factory pc

Insert Net Cost From Costing To Factory Cost For Retail Price Calculation Fty. cost USD 25.40

Cost 1: ie. material import tax, transport, finance charges, rebate material trim cost 4.72 0.00% 0.00

Cost 2: ie. labor insurance, retirement, overhead, tax rebate labor cost 4.42 0.00% 0.00

Cost 3: 26.94 0.00% 0.00

Cost 4: 0.00 0.00% 0.00

Cost 5: 0.00 0.00% 0.00

Cost 6: 0.00 0.00% 0.00

Cost 7: 0.00 0.00% 0.00

Cost 8: 0.00 0.00% 0.00

Cost 9: 0.00 0.00% 0.00

Cost 10: ie. cargo import duty 0.00 0.00% 0.00

Cost 11: ie. container consolidation fee, distribution centre cost, door to door courier charges 0.00 0.00% 0.00

landed L. D. P. 25.40

Retail MU% ie. retailer mark up or mark down 55% - discounter, 400% - brand label 0.00% 0.00

Selling Tax ie. selling tax, GST, VAT, PST 0.00% 0.00

Recalculate By Percentage - after quote currency, net cost or retail cost being updated

retail ticket price 0.00

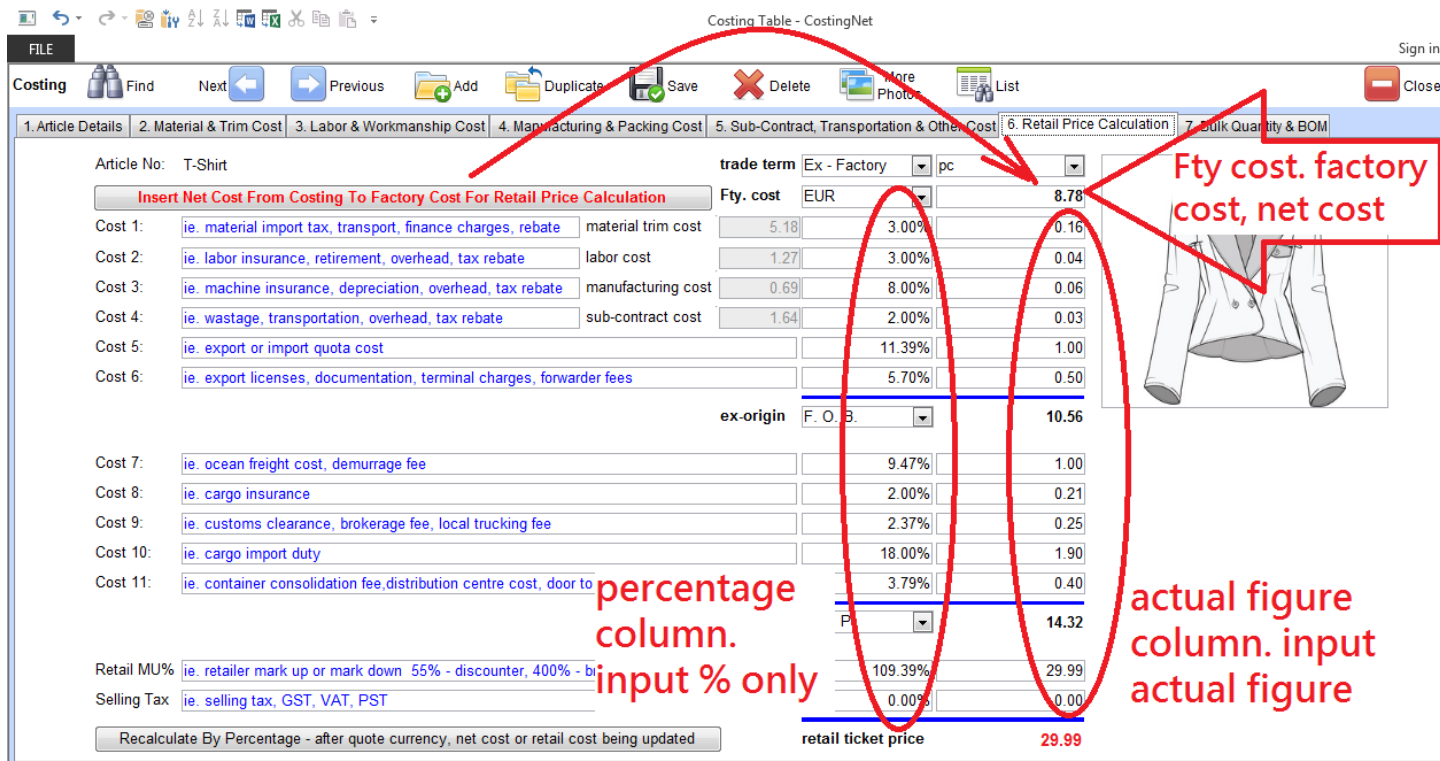
click this insert net cost button to Insert the Net Cost from the cost summary into this Fty Cost Field OR directly input a Fty Cost rather than using the cost summary calculated result.

The retail price calculation base on two column of figures, one is the percentage and the other is figures.

If the style do not require the further calculation of ex-origin, landed and retail price, merchandiser only need to insert the net cost to the Fty cost field and so it is done.

But if the merchandiser is required to finish the complete cost until retail price and markup percentage for final customer's review, they have to fill in the cost 1, cost 2, and cost 3 ...etc. and so on.

An example of the required cost element is shown in blue color of the cost description. Merchandiser may input accordingly or overwrite whatever it is necessary to finalize the retail price for their final customer.



Costing Table - CostingNet

Article No: T-Shirt

trade term: Ex - Factory

pc

Insert Net Cost From Costing To Factory Cost For Retail Price Calculation

Fty. cost: EUR 8.78

Cost 1: material import tax, transport, finance charges, rebate (material trim cost 5.18, 3.00%, 0.16)

Cost 2: labor insurance, retirement, overhead, tax rebate (labor cost 1.27, 3.00%, 0.04)

Cost 3: machine insurance, depreciation, overhead, tax rebate (manufacturing cost 0.69, 8.00%, 0.06)

Cost 4: wastage, transportation, overhead, tax rebate (sub-contract cost 1.64, 2.00%, 0.03)

Cost 5: export or import quota cost (11.39%, 1.00)

Cost 6: export licenses, documentation, terminal charges, forwarder fees (5.70%, 0.50)

ex-origin: F. O. B. 10.56

Cost 7: ocean freight cost, demurrage fee (9.47%, 1.00)

Cost 8: cargo insurance (2.00%, 0.21)

Cost 9: customs clearance, brokerage fee, local trucking fee (2.37%, 0.25)

Cost 10: cargo import duty (18.00%, 1.90)

Cost 11: container consolidation fee, distribution centre cost, door to door (3.79%, 0.40)

Retail MU%: retailer mark up or mark down 55% - discounter, 400% - boutique (109.39%, 29.99)

Selling Tax: selling tax, GST, VAT, PST (0.00%, 0.00)

Recalculate By Percentage - after quote currency, net cost or retail cost being updated

retail ticket price: 29.99

Fty cost. factory cost, net cost

percentage column. input % only

actual figure column. input actual figure

Merchandiser may input percentage or actual figures to the column field for calculation if necessary.

For an example;

If you input the percentage; it will calculate the actual figures amount field

If you input the actual amount figure; it will calculate the percentage % field.

The percentage is based on material trim cost, labor cost, manufacturing cost and subcontract cost.

Also base on Fty cost (factory cost), ex-origin cost and landed cost figures.

In the retail markup%, merchandiser may input the MU% or retail price directly, it will then calculate backward to show you the MU% if a retail price is input directly to the field.

Costing Find Next Previous Add Duplicate Save Delete More Photos List

1. Article Details 2. Material & Trim Cost 3. Labor & Workmanship Cost 4. Manufacturing & Packing Cost 5. Sub-Contract, Transportation & Other Cost 6. Retail Price Calculation 7. Bulk Quantity & BOM

Article No: T-Shirt trade term Ex - Factory pc

Insert Net Cost From Costing To Factory Cost For Retail Price Calculation

Fty. cost EUR 8.78

Cost 1: ie. material import tax, transport, finance charges, rebate material trim cost 5.18 3.00% 0.16

Cost 2: ie. labor insurance, retirement, overhead, tax rebate labor cost 1.27 3.00% 0.04

Cost 3: ie. machine insurance, depreciation, overhead, tax rebate manufacturing cost 0.69 8.00% 0.06

Cost 4: ie. wastage, transportation, overhead, tax rebate sub-contract cost 1.64 2.00% 0.03

Cost 5: ie. export or import quota cost 11.39% 1.00

Cost 6: ie. export licenses, documentation, terminal charges, forwarder fees 5.70% 0.50

ex-origin F. O. B. 10.56

Cost 7: ie. ocean freight cost, demurrage fee 9.47% 1.00

Cost 8: ie. cargo insurance 2.00% 0.21

Cost 9: ie. customs clearance, brokerage fee, local trucking fee 2.37% 0.25

Cost 10: ie. cargo import duty 18.00% 1.90

Cost 11: ie. container consolidation fee, distribution centre cost, door to door courier charges 3.79% 0.40

landed L. D. P. 14.32

Retail MU% ie. retailer mark up or mark down 55% - discounter, 400% - brand label 109.39% 29.99

Selling Tax ie. selling tax, GST, VAT, PST 0.00% 0.00

Recalculate By Percentage - after quote currency, net cost or retail cost being updated

retail ticket price 29.99

Calculations:

- $5.18 \times 3\% = 0.16$
- $1.64 \times 2\% = 0.03$
- $10.56 \times 9.47\% = 1$
- $10.56 \times 18\% = 1.9$
- input 29.99 will get MU% = 109.39%

Let's take an example base on above screen on the retail price calculation. Suppose a merchandiser want to;

- Cost 1: Add material trim finance cost by %, input 3% to material trim cost % field > $5.18 \times 3\% = 0.16$
- Cost 4: Add subcontract overhead by %, input 2% to sub-contract cost % field > $1.64 \times 2\% = 0.03$
- Cost 7: Add ocean freight cost by %, input 9.47% to ocean freight cost field > (ex-origin FOB) $10.56 \times 9.47\% = 1.00$
- Cost 10: Add cargo import duty by %, input 18% to cargo import duty field > $10.56 \times 18\% = 1.90$
- Retail MU%: Fix retail price at 29.99, input 29.99 to retail MU% actual figure field > $(29.99 - 14.32) / 14.32 = 109.39\%$

Cost 1:	ie. material import tax, transport, finance charges, rebate	material trim cost	5.18	3.00%	0.16
Cost 2:	ie. labor insurance, retirement, overhead, tax rebate	labor cost	1.27	3.00%	0.04
Cost 3:	ie. machine insurance, depreciation, overhead, tax rebate	manufacturing cost	0.69	8.00%	0.06
Cost 4:	ie. wastage, transportation, overhead, tax rebate	subcontract cost	1.64	2.00%	0.03
Cost 5:	ie. export or import quota cost			11.39%	1.00
Cost 6:	ie. export licenses, documentation, terminal charges, forwarder fees			5.70%	0.50
				ex-origin	F. O. B. 10.56
Cost 7:	ie. ocean freight cost, demurrage fee			9.47%	1.00
Cost 8:	ie. cargo insurance			2.00%	0.21
Cost 9:	ie. customs clearance, brokerage fee, local trucking fee			2.37%	0.25
Cost 10:	ie. cargo import duty			18.00%	1.90
Cost 11:	ie. container consolidation fee, distribution centre cost, door to door courier charges			3.79%	0.40
				landed	L. D. P. 14.32
Retail MU%	ie. retailer mark up or mark down 55% - discounter, 400% - brand label			109.39%	29.99
Selling Tax	ie. selling tax, GST, VAT, PST			0.00%	0.00
					Retail Ticket Price 29.99

Costing sheet example

Below is an example of the costing sheet print format. Suppose for management, merchandising manager review.

Cost ID 150

Issue Date 04-Mar-14

Article No T-Shirt

Reference fine gauge knitted T shirt

Customer American Eagle Outfitters

Collection Fall / Winter 2015

Item Group fine knit

Brand AEO

Description 100% organic cotton jersey T shirt

Origin Bangladesh

Finishing Non Wash

Net Cost & Retail Price Calculation Sheet

Confidential

Costing Remarks - Internal Use Only

1. Fine gauge 28gg
2. Light weight 120 gm / sq meter
3. Solid color
4. Organic cotton (prima)
5. 2x2 lycra rib
6. 2x2 interlock collar

2nd Currency	BDT	Trade Term	Ex - Factory
Material Trim	545.53	Costing Unit	pc
Labor	133.83	Currency	EUR
Manufacture	73.00	Material Trim	5.18
+ Sub-Contract	173.00	Labor	1.27
		Manufacture	0.69
+ Net Cost	925.36	+ Sub-Contract	1.64
		Net Cost	8.78

Material & Trims	Remarks	Spec	Supplie	YY	Wastage	Curr	Price Unit	Subtotal	InQuoteCur
single jerseyknit fabric	100% organic cotton	32s 2ply	knitter	1.200	6.00%	BDT	120.000 Lb	152.64	1.45
2x2 interlock collar	92% cotton 8% lycra	80s 2ply	knitter	0.250	6.00%	BDT	220.000 Lb	58.30	0.55
2x2 rib sleeve opening	92% cotton 8% lycra	80s 2ply	knitter	0.150	6.00%	BDT	280.000 Lb	44.52	0.42
main label	woven wording	2 inch	trim	1.000	3.00%	BDT	45.000 pc	46.35	0.44
care label	woven wording	1 inch	trim	1.000	3.00%	BDT	25.000 pc	25.75	0.24
size label	woven wording	1 inch	trim	1.000	3.00%	BDT	10.000 pc	10.30	0.10
Hangtag	printed wording	2 x 4 inch	label	1.000	3.00%	BDT	10.000 pc	10.30	0.10
shoulder tape	silicone elastic	1/2 inch	trim	0.250	3.00%	BDT	52.000 Yd	13.39	0.13
sewing thread	polyester	120s	coats	5.000	3.00%	BDT	25.000 Yd	128.75	1.22
shell button	shell bleached	22L	trim	3.000	3.00%	BDT	15.000 pc	46.35	0.44
polybag	polyetherane	PED4	label	1.000	3.00%	BDT	8.000 pc	8.24	0.08
carton box	paper	3 ply	label	0.125	3.00%	BDT	5.000 pc	0.64	0.01
									5.18

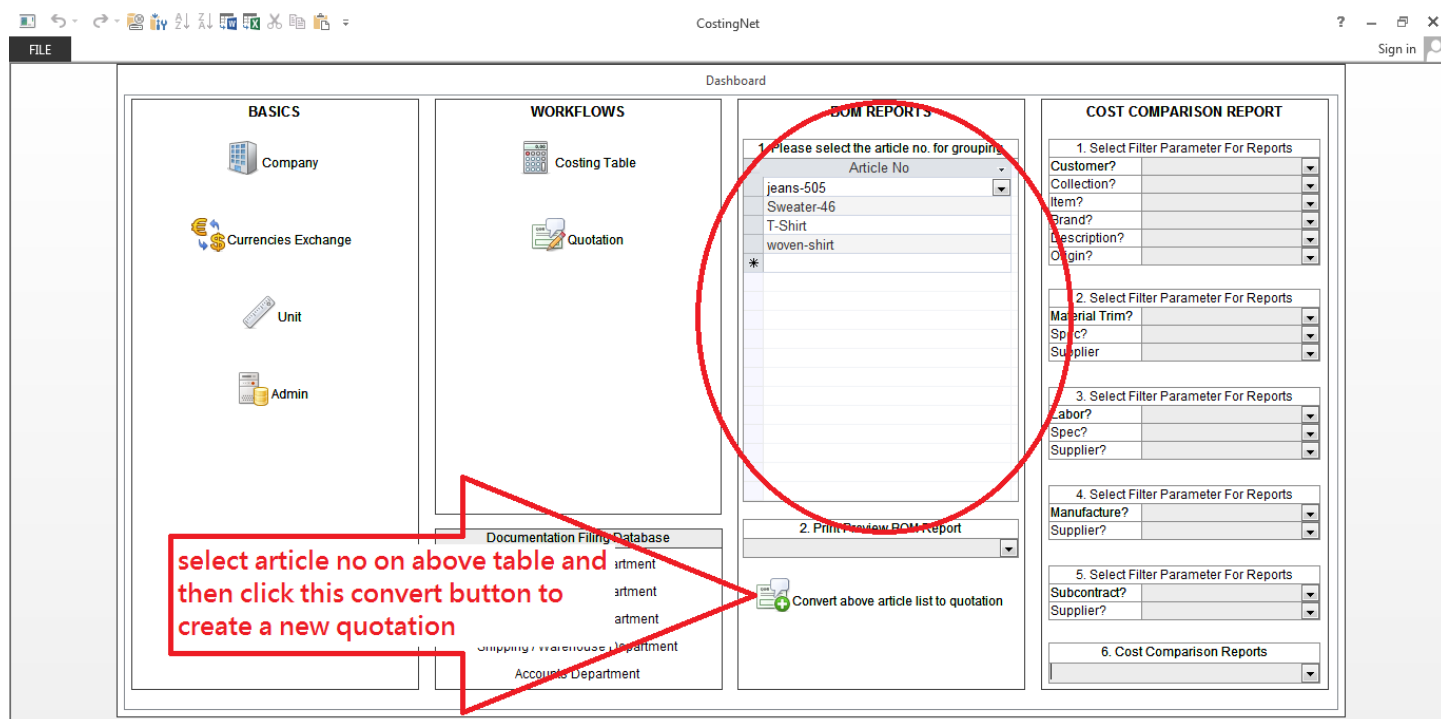
Labor & Workmanship	Remarks	Spec	Supplie	Manhour	Curr.	Hourly Charge Unit	Subtotal	InQuoteCur
stitching	front body	15TPI	inhouse	1.000	BDT	12.000 pc	12.00	0.11
collar setting	interlock rib collar	lockstitch	inhouse	1.000	BDT	18.000 pc	18.54	0.18
cuff setting	2x2 rib stitching	lockstitch	inhouse	12.345	BDT	6.000 pc	74.81	0.71
hem setting	2x2 rib stitching	overlock	inhouse	1.000	BDT	15.000 pc	15.00	0.14
sewing	stitching	10SPI	inhouse	1.123	BDT	12.000 pc	13.48	0.13
								1.27

Manufacture	Remarks	Supplier	Curr.	Price Unit	Subtotal	InQuoteCur
bulk cutting	cutting piece	inhouse	BDT	15.00 pc	15.00	0.14
woven lining fusing	use fusing machine	inhouse	BDT	12.00 pc	12.00	0.11
off pressing	by hunk presser	inhouse	BDT	9.00 pair	9.00	0.09

If you need to change the currency in the cost summary table, please select in the pull down menu of the **quote currency** field of the cost summary table. Once your click and select another currency (default is USD), change will be reflected with the relevant exchange rate of the selected currency.

Create quotation

Step 1: On the dashboard, please select the articles that you want to issue quotation, and then use the convert button to generate a new quotation.



Dashboard

BASICS

- Company
- Currencies Exchange
- Unit
- Admin

WORKFLOWS

- Costing Table
- Quotation

BOM REPORTS

1. Please select the article no. for grouping

Article No
jeans-505
Sweater-46
T-Shirt
woven-shirt
*

2. Print Preview BOM Report

Convert above article list to quotation

COST COMPARISON REPORT

1. Select Filter Parameter For Reports

Customer?

Collection?

Item?

Brand?

Description?

Origin?

2. Select Filter Parameter For Reports

Material Trim?

Spec?

Supplier?

3. Select Filter Parameter For Reports

Labor?

Spec?

Supplier?

4. Select Filter Parameter For Reports

Manufacture?

Supplier?

5. Select Filter Parameter For Reports

Subcontract?

Supplier?

6. Cost Comparison Reports

Documentation Filing Database

Department

Department

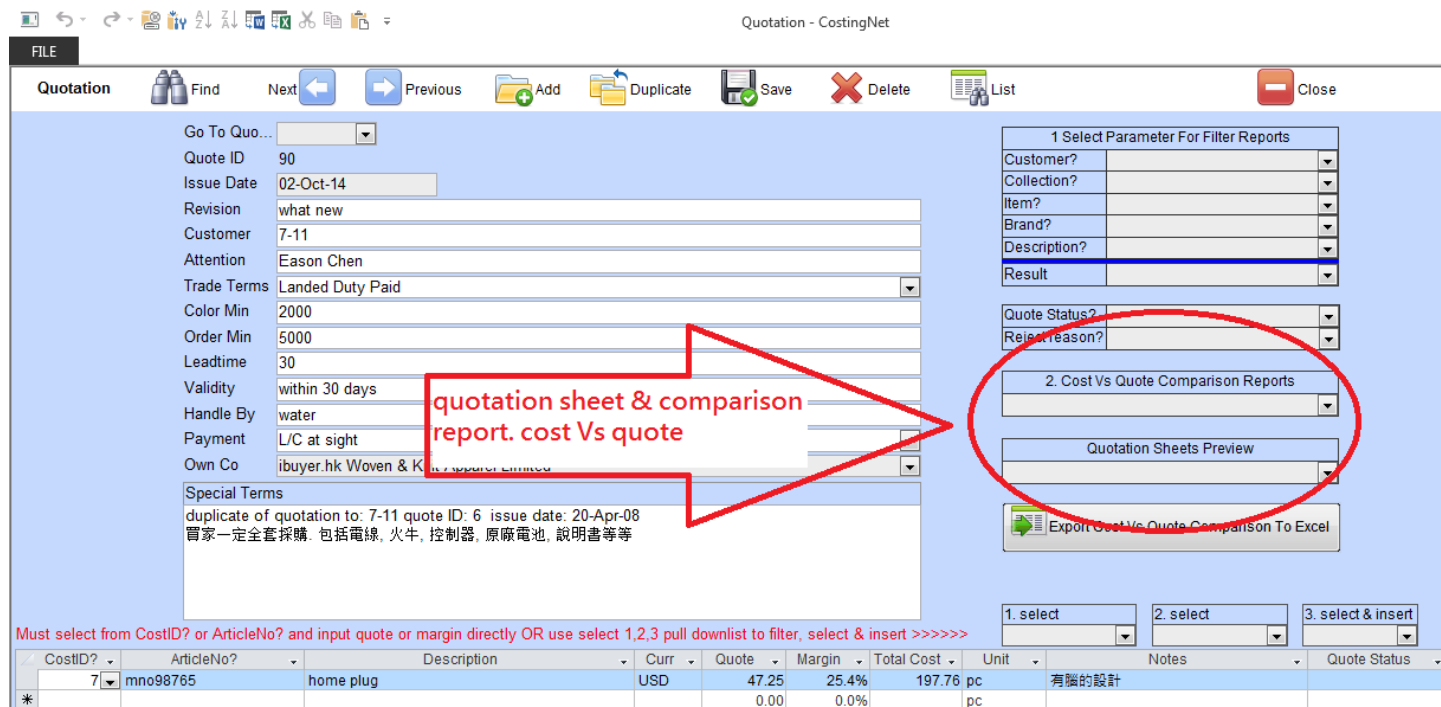
Department

Shipping / Warehouse Department

Accounts Department

select article no on above table and then click this convert button to create a new quotation

Step 2. The quotation form will then open automatically with the articles that you have selected from the table.



Quotation - CostingNet

Quotation

Find Next Previous Add Duplicate Save Delete List Close

Go To Quo...

Quote ID 90

Issue Date 02-Oct-14

Revision what new

Customer 7-11

Attention Eason Chen

Trade Terms Landed Duty Paid

Color Min 2000

Order Min 5000

Leadtime 30

Validity within 30 days

Handle By water

Payment L/C at sight

Own Co ibuyer.hk Woven & Knit Apparel

Special Terms

duplicate of quotation to: 7-11 quote ID: 6 issue date: 20-Apr-08
買家一定全套採購, 包括電線, 火牛, 控制器, 原廠電池, 說明書等等

1 Select Parameter For Filter Reports

Customer?

Collection?

Item?

Brand?

Description?

Result

Quote Status?

Reject Reason?

2. Cost Vs Quote Comparison Reports

Quotation Sheets Preview

Export Cost Vs Quote Comparison To Excel

1. select 2. select 3. select & insert

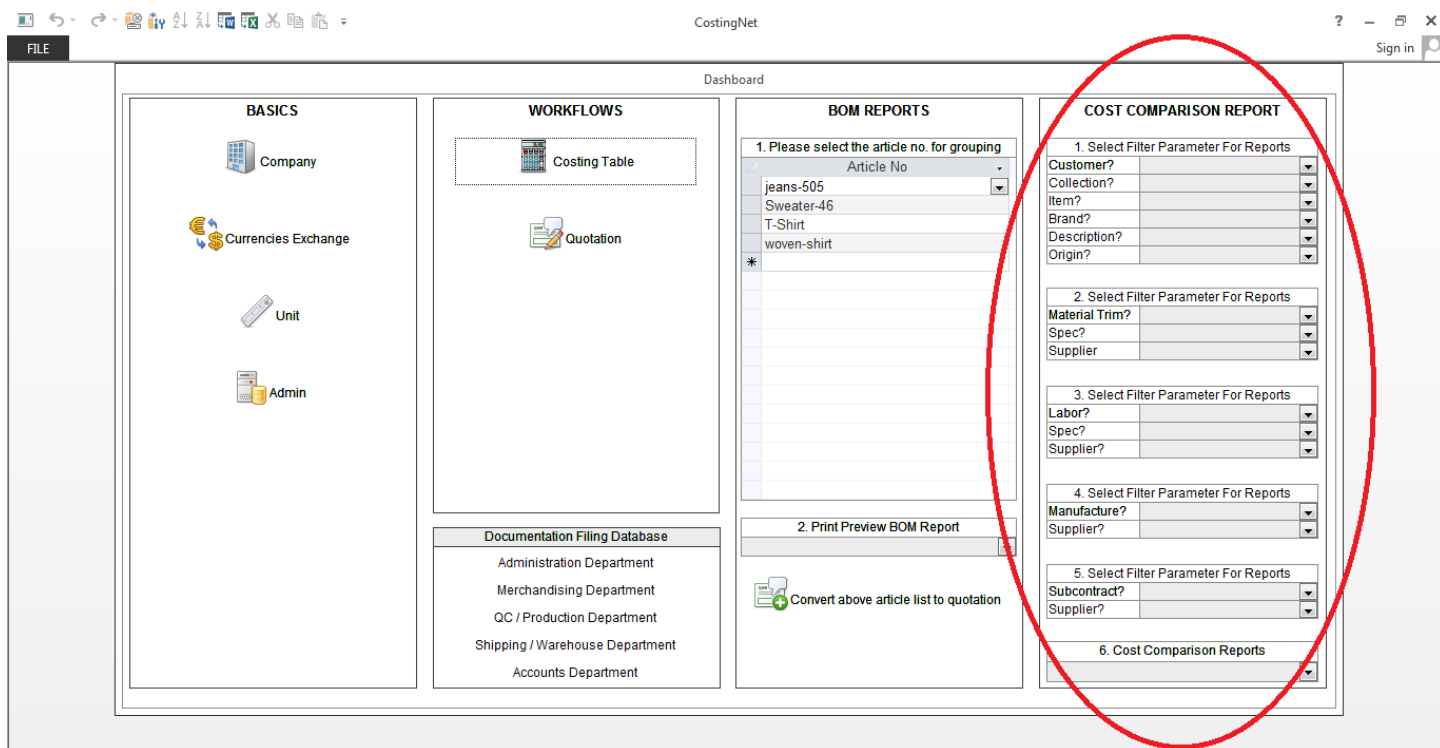
CostID?	ArticleNo?	Description	Curr	Quote	Margin	Total Cost	Unit	Notes	Quote Status
7	mno98765	home plug	USD	47.25	25.4%	197.76	pc	有腦的設計	
*				0.00	0.0%		pc		

Must select from CostID? or ArticleNo? and input quote or margin directly OR use select 1,2,3 pull downlist to filter, select & insert >>>>>>

quotation sheet & comparison report. cost Vs quote

There is three format of quotation sheet; Quotation Sheet Text Format, Quotation Sheet with Photo & Quotation Sheet Mini-Sketches Format. May also use cost vs. quote comparison to review margin, profit and production cost

Cost comparison report



The cost comparison report is the core value of CostingNet software. There is different grouping of cost history compare report. These report just like the above mentioned grouping and is used for management review of the costing history. Which is used to determine what product has the cheapest cost and is more benefit for your company when promoting to your customer? Also find out the most competitive garment item being produced.

Merchandise may use the select the filter parameter for report to sort out and filter the material / trim group, such that merchandise can find out the cheapest fabric / trim for the same group in the costing history.

Cost breakdown compare - Material & Trims cost

Material Item	100% cotton fabric	Average Cost	1.78										
Cost ID	Article No	Description	Material & Trims	Remarks	Spec	Supplier	YY Wastage	Curr.	Price Unit	Subtotal	In USD	Date	Quote
148	dress	ladies 100% cotton dress	100% cotton fabric	70x42 / 10s 1	30Z	Vanderbt	2.200	3.00% INR	1.340 Yd	3.04	0.05	10-Mar-13	
104	article new	mens woven 100% cotton 200's egyptia	100% cotton fabric	hong kong denim	10oz	MU	1.230	5.00% USD	1.567 can	2.02	2.02	21-Jun-10	
112	123456789012	iphone new version	100% cotton fabric	hong kong denim	10oz	MU	1.230	5.00% USD	1.567 bag	2.02	2.02	11-Sep-10	
109	123456789012	iphone new version	100% cotton fabric	hong kong denim	10oz	MU	1.230	5.00% USD	1.567 bag	2.02	2.02	21-Jun-10	
105	newarticle	ladies slipper	100% cotton fabric	hong kong denim	10oz	MU	1.230	5.00% USD	1.567 can	2.02	2.02	21-Jun-10	
98	efghk	denim jeans	100% cotton fabric	hong kong denim	10oz	MU	1.230	5.00% USD	1.567 can	2.02	2.02	04-Jun-10	
142	abode-12345	woven yarn dyed stripe mens shirt	100% cotton fabric	hong kong denim	10oz	MU	1.230	5.00% USD	1.567 can	2.0	2.02	08-Oct-11	
92	abode-12345	woven yarn dyed stripe mens shirt	100% cotton fabric	hong kong denim	10oz	MU	1.230	5.00% USD	1.567 can	2.0	2.02	10-Feb-10	
Material Item	100% cotton fabric	Average Cost	0.44										
Cost ID	Article No	Description	Material & Trims	Remarks	Spec	Supplier	YY Wastage	Curr.	Price Unit	Subtotal	In USD	Date	Quote
115	no article numb	new adding formation to costingnet fort	100% cotton fabric	hong kong denim	10oz	MU	0.120	5.00% USD	1.980 can	0.25	0.25	07-Oct-10	
42	no article numb	new adding formation to costingnet fort	100% cotton fabric	hong kong denim	10oz	MU	0.120	5.00% USD	1.980 can	0.25	0.25	07-Oct-09	
13	new-288	100% cotton denim 100Z indigo navy	100% cotton fabric	hong kong denim	10oz	MU	0.120	5.00% USD	1.980 can	0.25	0.25	02-May-08	
136	UITOM	denim jeans	100% cotton fabric	hong kong denim	10oz	MU	0.120	5.00% USD	1.980 can	0.25	0.25	26-Nov-13	
134	no-article-no	ladies woven polyester dress	100% cotton fabric	hong kong denim	10oz	MU	0.120	5.00% USD	1.980 can	0.25	0.25	28-Nov-13	
85	anynewarticle	100% polyester with filling jacket	100% cotton fabric	hong kong denim	10oz	MU	0.120	5.00% USD	1.980 can	0.25	0.25	11-Oct-09	
86	anynewarticle2	100% polyester with filling jacket	100% cotton fabric	hong kong denim	10oz	MU	0.120	5.00% USD	1.980 can	0.25	0.25	14-Oct-09	
79	new-288	100% cotton denim 100Z indigo navy	100% cotton fabric	hong kong denim	10oz	MU	0.120	5.00% USD	1.980 can	0.25	0.25	13-Oct-09	
96	abode123-1	iphone new version-1	100% cotton fabric	hong kong denim	10oz	MU	0.120	5.00% USD	1.980 can	37	0.37	18-May-10	
87	abode-12345	woven promo design dress	100% cotton fabric	hong kong denim	10oz	MU	0.120	5.00% USD	1.980 can	11	1.41	17-Oct-09	
153	abode-12345	woven promo design dress	100% cotton fabric	hong kong denim	10oz	MU	0.120	5.00% USD	1.980 can	11	1.41	02-Oct-14	
50	abode123-1	iphone new version-1	100% cotton fabric	hong kong denim	10oz	MU	0.120	5.00% USD	1.980 can	16	2.63	19-Oct-09	

list out the material / trim cost in USD for compare. Red color means below average.

It will list out the average cost in USD for comparison. Meantime sort out in ascending order for easy reference.

The cost comparison report serve the same purpose but just in different grouping. It use the filter above to set up parameter to pull out and filtered the result for the management to review. It will find out the cheapest fabric within the same group, lowest cost within same subcontract process.

Cost History Comparison By Above Filter

Quotation Analysis Summary

Material Trim Cost Comparison By Above Filter

Labor Cost Comparison By Above Filter

Manufacturing Cost Comparison By Above Filter

Sub-Contract Cost Comparison By Above Filter

Cost Vs Quote Analysis By Customer										Confidential		
Customer A & F												
Cost ID	Article No	Description	Labor Subtotal				CMSum=Manufacture Subtotal				SubCon= Subcontract Subtotal	
			Average Margin 25.00%				SubCon Net Cost Curr Quote Margin Note					
142	abode-12345	woven yam over shirt	6.73	25.40	USD	35.00	41.6%					8
28	28 item number	100% cotton T-shirt	1.17	15.77	USD	25.00	37.0%					8
147	append-147	cotton towel 3 pieces set	7.20	224.86	USD	490.11	36.0%					8
146	append-146	cotton towel 3 pieces set	7.20	224.87	USD	490.13	36.0%					8
144	append-144	cotton towel 3 pieces set	185.69	15.83	16.14	7.20	224.87	USD	490.13	36.0%	13-Dec-13 A & F	zheng eddie zheng 88
143	append-143	cotton towel 3 pieces set	180.95	15.55	13.98	4.00	214.52	USD	326.88	36.0%	13-Dec-13 A & F	eddie zheng 88
143	append-143	cotton towel 3 pieces set	180.95	15.55	13.98	4.00	214.52	USD	326.88	35.8%	13-Dec-13 A & F	eddie zheng 87
147	append-147	cotton towel 3 pieces set	185.69	15.83	16.14	7.20	224.86	USD	490.11	35.8%	13-Dec-13 A & F	eddie zheng 87
146	append-146	cotton towel 3 pieces set	185.69	15.83	16.14	7.20	224.87	USD	490.13	35.8%	13-Dec-13 A & F	eddie zheng 87
144	append-144	cotton towel 3 pieces set	185.69	15.83	16.14	7.20	224.87	USD	490.13	35.8%	13-Dec-13 A & F	eddie zheng 87
149	woven-shirt	Mens 100% organic cotton woven shirt	9.94	1.42	0.69	0.50	12.55	USD	32.60	25.0% new order	06-Mar-14 A & F	eddie zheng 89
150	T-Shirt	100% organic cotton jersey T-shirt	6.99	1.72	0.94	2.22	11.86	EUR	19.10	25.0% repeat order	06-Mar-14 A & F	eddie zheng 89
151	Sweater-46	92% lambs wool 8% spandex knitted sweater	10.33	3.08	0.21	0.38	14.00	USD	20.16	25.0% test order	06-Mar-14 A & F	eddie zheng 89
152	jeans-505	mens 100% cotton woven indigo denim jeans	5.77	1.87	0.56	0.22	8.42	USD	12.46	25.0% surcharge below MOQ 4	06-Mar-14 A & F	eddie zheng 89

This is the core value for CostingNet when your merchandiser creating costing sheet during operation, at the same time gathering detail cost summary by these input, hence improve the accuracy on cost control. Meantime keep track of fabrics, trims, labor, manufacturing and subcontracting cost. Providing cost vs. quote analysis, which is used to find out the cheapest supplier against the most generous customer? As a result improving your company overall profit margin.

Quotation Analysis Summary

Reason	Accepted	On Hold	Rejected	Style Cancelled	Style Changed	Total No of quote
	141					143
delivery too long		10	16	3	15	44
MOQ too high		5	16	3	4	28
price too high	1	6	28	3	5	43
quality issue		16	24	8	6	54
	142	37	84	17	30	312
	45.51%	11.86%	26.92%	5.45%	9.62%	

Workgroup user name and password

Our database software by nature is being used by multiple user over a company network in order to get the most benefit of its information sharing purpose, thus a structural database is very powerful for business operation. On top of sharing data beyond merchandisers, user right control is also important to limit individual staff to access any sensitive information. In this connection, we have designed our database software with build-in user right workgroup to achieve this goal. Listed below is the build-in user name, password and their right.

By default, all users password is **123** for all logon names.

<u>User name</u>	<u>password</u>	<u>right</u>
CEO	123	admin
Ibuyer.hk	6644911911	project designer
Boss	123	admin
ReadOnly	123	read only
AddOnly	123	add data only
EditOnly	123	edits data only
Jsales	123	costing modules
Jsales01	123	costing modules
Jsales02	123	costing modules
Jsales03	123	costing modules
Sales	123	costing modules
Sales01	123	costing modules
Sales02	123	costing modules
Sales03	123	costing modules
Merchan01	123	costing & quotation modules
Merchan02	123	costing & quotation modules
SrMerchan01	123	costing & quotation modules
SrMerchan02	123	costing & quotation modules
MerchanMgr	123	all modules

That is for the CostingNet software and we really hope our product can help increasing your company's profit margin and on the other hand minimize your operating cost. Especially in the serious inflation of raw material and operating cost but very tight profit margin getting from retail market.